

ESTATE PLANNING NEWS

Called to More—Create a Legacy

Hi—

Bethel students are deep in their studies. They are pursuing God and they are pursuing the future He has planned for each of them.

Be blessed as you read this month's newsletter and hear of a current Bethel student whose future is unfolding and a Bethel alumna whose been so impacted by her Bethel experiences that she's chosen to include Bethel students in her legacy.

You are a part of both of these women's stories. Your prayers for Bethel have touched their lives and your kind generosity has, too.



You can leave a legacy of impact, like Krista has, through a bequest to Bethel. It is because of donors like you that generation after generation of Bethel students are empowered to serve for God's glory and our neighbors' good. Thank you!

If you have questions or would like to talk to a member of our team about your legacy, please reach out. We'd love to hear from you.

Adel Irwin

Senior Director of Planned Giving and Operations

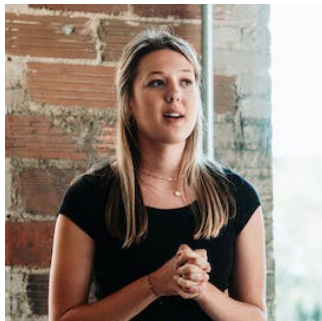
Donor Story



Dr. Krista Kaups '79 fondly remembers the close connections she built with her Bethel professors and classmates. Her time in the chemistry department prepared her for a career as a leading surgeon in California. She remains dedicated to helping students have similar experiences at Bethel. She and her family formed the Krista L. Kaups Scholarship Fund, and Kaups has supported Bethel in several ways, including regular donations to help Bethel expand its science facilities. She is perhaps most excited by the addition of the Nelson-Larson Science Center. Kaups says Bethel now has the space to match the skill, acclaim, and quality of its professors in the sciences.

Read the [full story](#).

Student Impact Story



Brynn Lee '23 has felt called to public speaking since middle school. Now, Bethel is helping her apply those skills to a possible career in ministry. A relational communications major, Lee gained valuable ministry experience during an internship with Pulse. She gave four sermons and participated in a two-day evangelistic training conference.

Read the [full story](#).

Leave An Enduring Impact

Many of us feel a compelling need to make a difference—to leave a lasting impact on the people and organizations that mean the most to us.

A [bequest](#) is the easiest, most tangible, and flexible way to leave a legacy of enduring significance.

BENEFITS OF MAKING A BEQUEST

- You leave a lasting legacy.
- You can lessen the burden of taxes on your estate, resulting in a larger inheritance for your heirs.
- You can choose to designate that a bequest be used for a general or specific purpose, so you have peace of mind knowing that your gift will be used as intended.
- You can continue to use property you will leave to charity during your life.
- A bequest is generally a revocable gift, meaning it can be changed or modified at any time.

AN EASY GIFT TO MAKE

A [bequest](#) is one of the easiest ways to give. With the help of an adviser, you can include language in your will or trust specifying a gift be made to family, friends, or Bethel University as part of your estate plan. You can make a bequest in a number of ways:

Specific Bequest. Make a gift of a specific asset such as real estate, a car, other property, or a gift of a specific dollar amount.

Percentage Bequest. Leave a specific percentage of your overall estate to Bethel University.

Residual Bequest. Make a gift from the balance of an estate after the will or trust has given away each of the specific bequests. A common residual bequest involves leaving a percentage of the residue of the estate to charity.

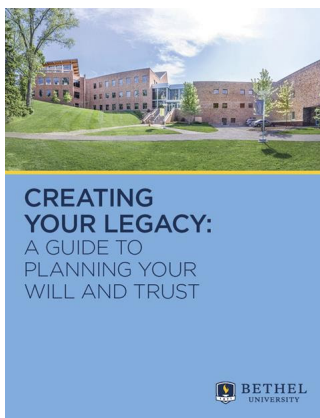
For more information, please call [Adel Irwin](#) or contact the Planned Giving office at 651.635.8053 or planned-giving@bethel.edu.

Estate Planning Resources

Creating a Will Is Easier Than You Think

Creating your will is your opportunity to carefully articulate your wishes, your values, and your legacy. This planning is important to help you *Provide* for and *Protect* your loved ones and the charitable organizations you care about after you're gone.

If you are thinking about creating or updating a will or trust, we can help. Bethel's website at bethel.edu/planned-giving includes a number of valuable resources about [wills and bequests](#), including wills videos, and a free personal and secure [online Wills Planner Account](#).



We would like to send a **FREE Wills Guide**, *Creating Your Legacy: A Guide to Planning Your Will and Trust*, to our friends and alumni. This guide is an easy-to-use, fill-in-the-blank booklet that can help you organize all of the information an estate planning attorney will need to create your will or trust plan.

Personal Planner

[Domicile - Where You Live Affects Your Taxes](#)

A successful business owner with a large estate passed away in 1976. He had grown up in Texas, moved to California and also lived for many years in Nevada. With a net estate of \$2.5 billion, his estate owed substantial federal and state taxes.

Savvy Living

[What You will Pay for Medicare in 2023](#)

From an entitlement program standpoint, 2023 is going to be a very good year for retirees!

Bethel's Planned Giving Team



Adel Irwin
*Senior Director of University
Advancement*



MaryKay Bursaw
*Manager of UA Planned Giving and
Scholarship Operations*

Office of Planned Giving

651.635.8053 (800.255.8706, ext. 8053)

planned-giving@bethel.edu

bethel.edu/planned-giving

This information is educational in nature. It is not offering professional tax, legal, or accounting advice. For specific advice about the effect of any planning concept on your tax or financial situation or with your estate, please consult a qualified professional advisor.